

Butterfly Valve Spacer Plate Dimensions

BFV Size	EVA-0309	EVA-0411	EVA-0514	EVA-0717	EVA-1022	EVA-1227	EVA-1436
----------	----------	----------	----------	----------	----------	----------	----------

Keystone and Similar Butterfly Valve

2"	Metric order code = P-1-82.6mm-F05-16.0mm	Metric order code = P-1-82.6mm-F05-11.0mm	Designates Tapped Design
2.5"	Imperial order code = P-1-3.25in-F05-0.63in	Imperial order code = P-1-3.25in-F05-0.43in	
3"			Designates Through Design
4"			
5"			
6"			
8"			
10"			
12"			
14"			
16"			

Metric order code = P-1-F1012-F1012-6.0mm
Imperial order code = P-1-F1012-F1012-0.24in

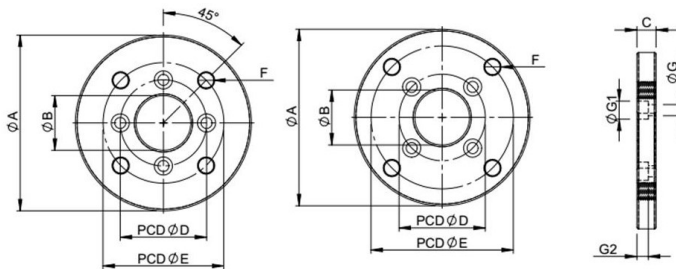
Note: Individual plates can be stacked to achieve desired height

Centerline, ABZ and Similar Butterfly Valve

2"	Metric order code = P-1-F07-F05-16.0mm	Metric order code = P-1-F07-F07-6.0mm	Note: Stack individual plates to achieve desired height
2.5"	Imperial order code = P-1-F07-F05-0.63in	Imperial order code = P-1-F07-F07-0.24in	
3"			Metric order code = P-1-F1012-F1012-6.0mm Imperial order code = P-1-F1012-F1012-0.24in Note: Individual plates can be stacked to achieve desired height
4"			
5"			
6"			
8"			
10"			
12"			
14"			
16"			

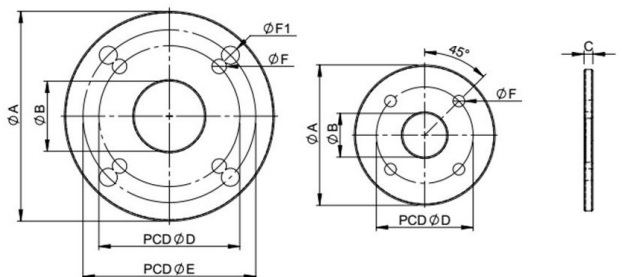
Spacer Plate With Tapped Hole

Tapped hole to interface valve side.



Space Plate With Through Hole

Through hole allows multiple plates to be stacked to achieve desired height.



Metric

Dimensions (mm)	Plate Ordering Code				
	P-1-82.6mm-F05-16.0mm	P-1-82.6mm-F05-11.0mm	P-1-F07-F05-16.0mm	P-1-F07-F07-6.0mm	P-1-F1012-F1012-6.0mm
Type	Tapped	Tapped	Tapped	Through	Through
A Ø	102.0	102.0	102.0	102.0	152.0
B Ø	31.8	31.8	31.8	31.8	50.8
C	16.0	11.0	16.0	6.0	6.0
D Ø	50.0 / F05	50.0 / F05	50.0 / F05	70.0 / F07	102.0 / F10
For	EVA	EVA	EVA	Valve & EVA	Valve & EVA
E Ø	82.6	82.6	70.0 / F07		125.0 / F12
For	Valve	Valve	Valve		Valve & EVA
F Ø	M8	M8	M8	8.4	10.5
F1 Ø					13.0
G Ø	6.4	6.4	6.4		
G1 Ø	10.5	10.5	10.5		
G2	6.5	6.5	6.5		

Imperial

Dimensions (inch)	Plate Ordering Code				
	P-1-3.25in-F05-0.63in	P-1-3.25in-F05-0.43in	P-1-F07-F05-0.63in	P-1-F07-F07-0.24in	P-1-F1012-F1012-0.24in
Type	Tapped	Tapped	Tapped	Through	Through
A Ø	4.02	4.02	4.02	4.02	5.98
B Ø	1.25	1.25	1.25	1.25	2.00
C	0.63	0.43	0.63	0.24	0.24
D Ø	1.97 / F05	1.97 / F05	1.97 / F05	2.76 / F07	4.02 / F10
For	EVA	EVA	EVA	Valve & EVA	Valve & EVA
E Ø	3.25	3.25	2.76 / F07		4.92 / F12
For	Valve	Valve	Valve		Valve & EVA
F Ø	3/8-16	3/8-16	5/16-18	0.33	0.41
F1 Ø					0.51
G Ø	0.25	0.25	0.25		
G1 Ø	0.41	0.41	0.41		
G2	0.26	0.26	0.26		