

Easytork

Positioner



Positioner Overview

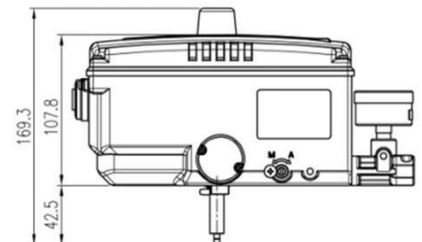
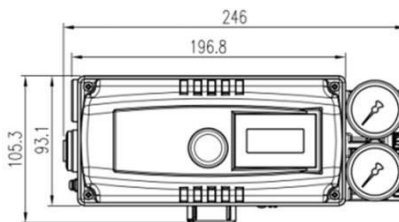
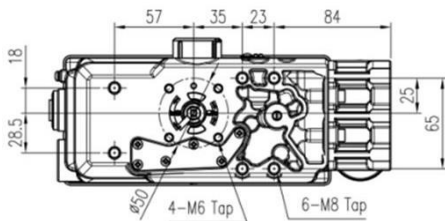
Smart Positioner

The 3300 Smart Valve Positioner accurately controls valve stroke, according to input signal of 4~20mA being delivered from controller

- Auto calibration
- Auto/Manual switch
- HART communication
- LCD display
- PID control
- 4 buttons for local control
- Feedback signal
- Limit switch



Item · Type	YT-3300	YT-3350
Input Signal	4~20mA DC	
Supply Pressure	0.14~0.7MPa(1.4~7 bar)	
Stroke	Linear Type	10~150mm
	Rotary Type	0 ~ 90°
Impedance	Max.500Ω @ 20mA DC	
Air Connection	PT(NPT,G)1/4	NPT 1/4
Gauge Connection	PT(NPT)1/8	NPT 1/8
Conduit	G(PF,NPT)1/2,M20	G(PF)1/2
Operating Temp.	Standard Type.	-30°C ~ 85°C (-22~185° F)
	Low Temp. Type.	-40°C ~ 85°C (-40~185° F)
LCD Operating Temp.	-30°C ~ 85°C (-22~185° F)	
Ambient Temp. of Explosion Proof	-40~60°C(T5) / -40~40°C(T6)	
Linearity	±0.5% F.S.	
Hysteresis	±0.5% F.S.	
Sensitivity	±0.2% F.S.	
Repeatability	±0.3% F.S.	
Air Consumption	Below 2LPM (sup=0.14MPa)	
Flow Capacity	70LPM (sup=0.14MPa)	
Output Characteristics	Linear, EQ%, Quick Open user set (16 Point)	
Material	Aluminum Diecasting	Stainless Steel 316
Ingress Protection	IP66	
Explosion Protection Type	ATEX, IECEx Ex ia IIC T5/T6 Gb, EX iaD IIIC T100°C/T85°C Db IP66 NEPSI Ex ia IIC T5/ T6 KCs Ex ia IIC T5/T6, EX iaD IIIC T100°C/T85°C CSA Pending FM Class I, Div 1, Groups ABCD Class I, Zone 0 AEx ia IIC Class III/II, Div 1, Groups EFG Class I, II, III, Div 2, Groups ABCDEFG NEMA Type 4 IP66 AMBIENT TEMP: -40°C ~ 60°C (T5) / -40°C ~ 40°C (T6)	
Communication(Optional)	HART(ver.7)	
L/S	Mechanical Type(Omron)	AC 125V, 3A DC 30V, 2A
	Proximity Type(P&F)	DC 8.2V 8.2mA
Weight	2kg (4.4lb)	5.1kg(11.2lb)



Positioner Overview

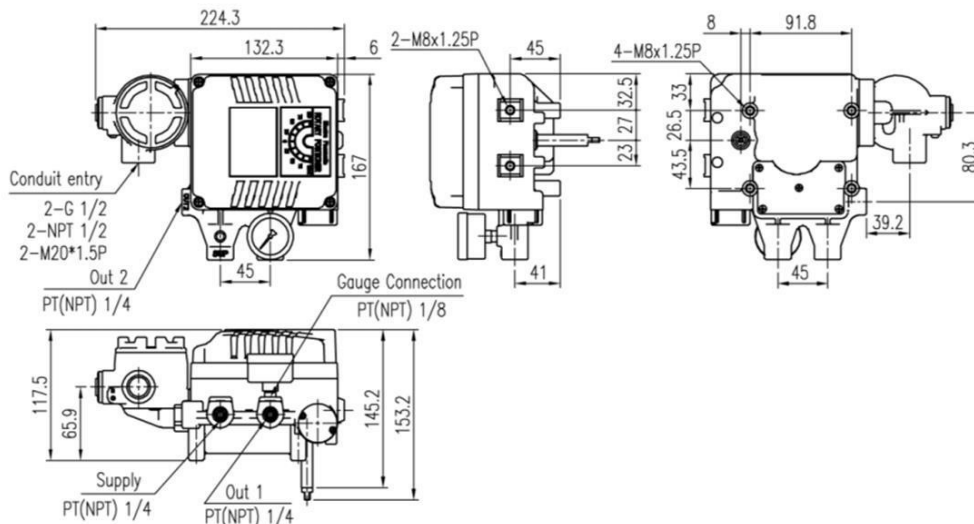
Electro Pneumatic Positioner

The Electro-Pneumatic Positioner 1000R is used for operation of pneumatic rotary valve actuators by means of electrical controller or control system with an analog output signal of DC 4 to 20mA or split ranges.

- Simple zero and span adjustment
- No resonance between 5-200Hz
- Auto/Manual switch
- RA vs.. DA action and 1/2 split range setting by simple adjustment.
- Internal feedback signal is available as an option (weather proof only)



Item · Type	Single	Double
Input Signal	4-20mA DC	
Impedance	250 ± 15 Ω	
Supply Pressure	0.14~0.7MPa(1.4~7 bar)	
Stroke	0 ~ 90°	
Air Connection	PT(NPT,G)1/4	
Gauge Connection	PT(NPT) 1/8	
Conduit	G(PF,NPT)1/2, M20	
Explosion Protection Type	ATEX (II 2 G)Ex dmb IIB T5 IECEX (II 2 G)EEx md IIB T5 KCs Ex dmb IIB T5/Ex d IIC T5 IP66/Ex ia IIB T6 Gb TS Ex d mb IIB T5 Gb X CSA (Class I, Zone 1)Ex dm IIB T5 FM XP-SI/1/CD/T5 Ta=60□; DIP/II, IIV/1/EFG/T5 Ta=60□; Type 4X NEPSI Ex dmb IIC T6 Gb TIS Ex dmb IIB T5	
Ingress Protection	IP66	
Operating Temp	Operating	-20°C~70°C(-4~158°F)
	Explosion	-20°C~60°C(-4~140°F)
Linearity	± 1% F.S.	± 2% F.S.
Hysteresis	± 1% F.S.	
Sensitivity	± 0.2% F.S.	± 0.5% F.S.
Repeatability	± 0.5% F.S.	
Air Consumption	2.5LPM (sup=0.14MPa)	
Flow Capacity	80LPM (sup=0.14MPa)	
Material	Aluminum Diecasting	
Weight	2.8kg (6.2 lb)	



Ordering Codes

Smart Positioner – YT 3300

Prefix	Model Number	Adders to Basic Version			Model
	Rotork Smart Positioner / YT-3300 / 4-20mA Input	Double acting, Rotary, Connection: NPT, -30°~85°C, Pressure gauge, Stock Bracket to Actuator.			Model
PS	- 3300RDN55	X	X	S -	YT
PS: Positioner		0: Basic Stock Version; Everything Listed Above 2: HART; w ith everything listed above	0: No Adder 1: 4-20mA feedback (PTM) 2: Limit Sw itch (Mechanical) 4: Visual Indicator + 4-20mA feedback (PTM) + Limit Sw itch (Mechanical)		

Basic Positioner – YT 1000

Prefix	Model Number	Rating	Model Number	Adders to Basic Version	Model
	Rotork Basic Positioner / YT-1000R / 4-20mA Input	Rating		Double acting, Rotary, Connection: NPT, -20°~60°C, Pressure gauge, Stock Bracket to Actuator.	Model
PS	- 1000RD	X	535S	X	- YT
PS: Positioner	N: Standard Version F: Ex-Proof FM (Available only w ith basic version - no other adders, i.e. 4-20ma feedback, or limit sw itch)		0: Basic Stock Version; Everything Listed Above	0: No Adder 1: 4-20mA feedback (SPTM Internal) 3: Limit Sw itch (Mechanical)	

Note: Easytork can provide complete positioner to actuator assembly in-house, which includes stainless steel fitting and tubing and full testing. Please inquire with Easytork for complete assembly order codes.

<p>About</p> <p>We believe in selling “easy”. Easytork brings differentiating features and benefits to the process control industry through our focus on innovation and quality. Easytork has been awarded numerous awards including:</p> <p>2013 – Arch Grants Recipient</p> <p>2015 – Accelerate St. Louis</p> <p>2017 – Frost & Sullivan Product Innovation Award</p>	<p>Global Headquarters</p> <p>2505 Metro Blvd, Suite A / B Maryland Heights, MO 63043 USA</p> <p>Main Tel: +1-314-266-0670 Main Fax: +1-314-222-7057 info@easytork.com www.easytork.com</p>
---	--