

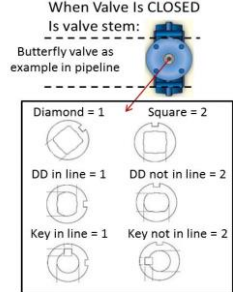
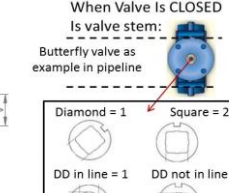
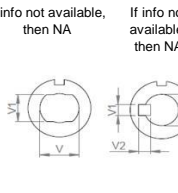
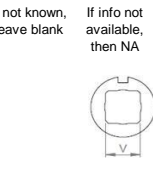
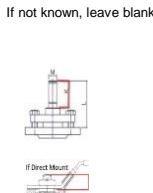
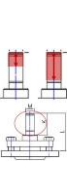
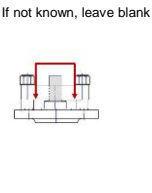
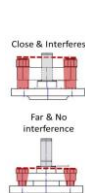
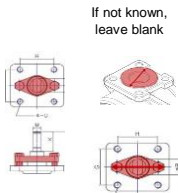
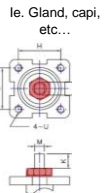
Generic Input		Easytork internal use only	
Valve Brand	ABZ	Valve Brand Truncate	ABZ
Series	401 CL150	Series Truncate	401
Input: 1 = mm / 2 = in	2		
Safety Factor	25%		

Actuator Design Year 21

Valve Input

				Section Only For Non Direct Mount ("D.M"), Otherwise Leave Blank						Valve Dimension											
Valve Torque		Direct Mount Check		Bracket Check		Extended Shaft Check		Buyer Preference		Valve Info		Valve Flange		Valve Dimension		Valve Stem Shape and Dimension					
Published valve torque	Incl. safety factor	Any obstruction over flange?		Possible obstruction for std. Easytork bracket?	Out. dia. of obstruction over flange surface	Are bolts for packing gland close to valve stem height?	If bolts interfere with valve stem, what is inside dia. between bolts	If w/ bracket: How much valve stem capture?	If known, capturable valve stem height	In ISO (i.e. F05)	Flange to top of valve stem	Stem Shape	Valve stem dimension in in or mm	V	Sq - sq DD - bore	V1	Sq - sq DD - flat b+k - key (leave blank if Sq or DD)	V2	b+k - key (leave blank if Sq or DD)	Insert orientation when valve is CLOSED. If Sq 1=diamond / 2=square If DD or B+K 1=in line / 2=not in line	
Valve Size	in-lb	in-lb	1=Yes / 0=No	1=Yes / 0=No	in/mm	1=Yes / 0=No	in/mm	in/mm	in/mm	in/mm	in/mm	in/mm	in/mm	in/mm	in/mm	in/mm	in/mm	in/mm	in/mm	in/mm	1 = Diamond or in line / 2=Square or not in line
2"	371	464									3.25	1.26	2	in	0.551	0.374					
2 1/2"	390	488									3.25	1.26	2	in	0.626	0.437					
3"	423	529									3.25	1.26	2	in	0.626	0.437					
4"	631	789									3.25	1.26	2	in	0.748	0.500					
5"	943	1,179									3.25	1.26	2	in	0.748	0.500					
6"	1,287	1,609									3.25	1.26	2	in	0.748	0.500					
8"	1,957	2,446									5	1.26	2	in	0.874	0.626					
10"	2,880	3,600									5	2.05	3	in	1.126	0.250		0.250			
12"	4,544	5,680									5	2.01	3	in	1.126	0.250		0.250			

Notes:



Disclaimer: Based on information available from valve manufacturer. All dimensions to be verified by customer prior to purchase confirmation.

Valve Size	Required Actuator Range	Actuator Torque (Actual torque, no additional safety factor included)				Individual Part Order Code* (If ordered with the below order codes, Easytork will ship each part as standalone)				Note	Complete Actuator to Valve Order Code*
		DA @ 60PSI	DA @ 80PSI	FS @ 60PSI	FS @ 80PSI	Actuator	Insert	Extended Shaft	Bracket		Easytork will ship the actuator, insert, extended shaft, and bracket unassembled in one SKU box. Refer to Assembly & Labor tab if buyer wants Easytork to assemble items together.
2"	EVA-0514	474	632	309	412	C-A-3-11-1-111	D-312-0.551x0.374in				
	EVA-0717	1,010	1,347	672	895	C-A-4-11-1-111	D-412-0.551x0.374in				ABZ.401.2".0717.21
2 1/2"	EVA-0514	474	632	309	412	C-A-3-11-1-111	D-312-0.626x0.437in				ABZ.401.2 1/2".0514.21
	EVA-0717	1,010	1,347	672	895	C-A-4-11-1-111	D-412-0.626x0.437in				ABZ.401.2 1/2".0717.21
3"	EVA-0514	474	632	309	412	C-A-3-11-1-111	D-312-0.626x0.437in				ABZ.401.3".0514.21
	EVA-0717	1,010	1,347	672	895	C-A-4-11-1-111	D-412-0.626x0.437in				ABZ.401.3".0717.21
4"	EVA-0717	1,010	1,347	672	895	C-A-4-11-1-111	D-412-0.748x0.500in				ABZ.401.4".0717.21
	EVA-1022	2,041	2,721	1,351	1,801	C-A-5-11-1-111	D-512-0.748x0.500in				ABZ.401.4".1022.21
5"	EVA-0717	1,010	1,347	672	895	C-A-4-11-1-111	D-412-0.748x0.500in				ABZ.401.5".0717.21
	EVA-1022	2,041	2,721	1,351	1,801	C-A-5-11-1-111	D-512-0.748x0.500in				ABZ.401.5".1022.21
6"	EVA-1022	2,041	2,721	1,351	1,801	C-A-5-11-1-111	D-512-0.748x0.500in				ABZ.401.6".1022.21
	EVA-1227	4,527	6,036	3,057	4,076	C-A-6-11-1-111	D-612-0.748x0.500in				ABZ.401.6".1227.21
8"	EVA-1022	2,041	2,721	1,351	1,801	C-A-5-11-1-111	D-512-0.874x0.626in				ABZ.401.8".1022.21
	EVA-1227	4,527	6,036	3,057	4,076	C-A-6-11-1-111	D-612-0.874x0.626in				ABZ.401.8".1227.21
10"	EVA-1227	4,527	6,036	3,057	4,076	C-A-6-11-1-111	D-613-1.126x0.250x0.250in				ABZ.401.10".1227.21
	EVA-1436	7,898	10,531	5,331	7,108	C-A-7-11-1-111	D-713-1.126x0.250x0.250in				ABZ.401.10".1436.21
12"	EVA-1227	4,527	6,036	3,057	4,076	C-A-6-11-1-111	D-613-1.126x0.250x0.250in				ABZ.401.12".1227.21
	EVA-1436	7,898	10,531	5,331	7,108	C-A-7-11-1-111	D-713-1.126x0.250x0.250in				ABZ.401.12".1436.21

Disclaimer: Based on information available from valve manufacturer. All dimensions to be verified by customer prior to purchase confirmation.

Note*: Only for actuator and hardware required for mounting to valve. Order auxiliary add-ons (e.g., solenoid valve, lockout & PST, limit switch, chemical resistant adder, etc.) separately. If buyer requires assembly of auxiliary add-ons and/or valve, labor will be charged separately.