

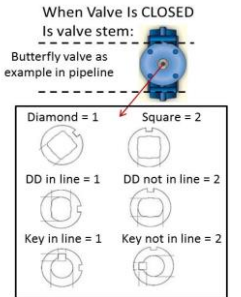
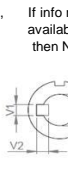
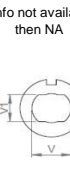
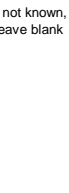
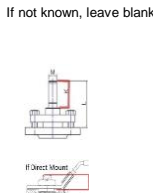
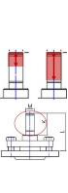
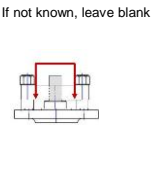
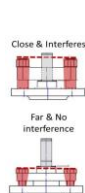
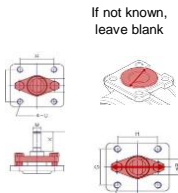
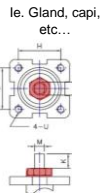
Generic Input		Easytork internal use only	
Valve Brand	Apollo	Valve Brand Truncate	AP
Series	76-AR	Series Truncate	76
Input: 1 = mm / 2 = in	2		
Safety Factor	25%		

Actuator Design Year 16

Valve Input

Direct Mount Check				Section Only For Non Direct Mount ("D.M"), Otherwise Leave Blank						Valve Dimension							
				Bracket Check		Extended Shaft Check		Buyer Preference		Valve Info		Valve Flange		Valve Dimension		Valve Stem Shape and Dimension	
Published valve torque	Incl. safety factor	Any obstruction over flange?	1=Yes / 0=No	Possible obstruction for std. Easytork bracket?	Out. dia. of obstruction over flange surface	Are bolts for packing gland close to valve stem height?	If bolts interfere with valve stem, what is inside dia. between bolts	If w/ bracket: How much valve stem capture?	If known, capturable valve stem height	In ISO (i.e. F05) or in	Flange to top of valve stem	Stem Shape	Valve stem dimension in in or mm	V	V1	V2	Insert orientation when valve is CLOSED. If Sq 1=diamond / 2=square If DD or B+K 1=in line / 2=not in line 1 = Diamond or in line / 2=Square or not in line
Valve Size	in-lb	in-lb	1=Yes / 0=No	1=Yes / 0=No	in/mm	1=Yes / 0=No	in/mm	in/mm	in/mm	in/mm	in/mm	in/mm	in/mm	in/mm	in/mm	in/mm	in/mm
1/4"	50	63	Yes	No		No		0.150	0.18	1.65	0.61	2	in	0.375	0.249		
3/8"	50	63	Yes	No		No		0.150	0.18	1.65	0.61	2	in	0.375	0.249		
1/2"	50	63	Yes	No		No		0.140	0.16	1.65	0.61	2	in	0.375	0.249		
3/4"	100	125	Yes	No		No		0.312	0.37	1.97	0.84	2	in	0.375	0.249		
1"	170	213	Yes	No		No		0.312	0.37	1.97	0.82	2	in	0.375	0.249		
1 1/4"	280	350	Yes	No		No		0.312	0.37	2.76	1.16	2	in	0.625	0.372		
1 1/2"	320	400	Yes	No		No		0.312	0.37	2.76	1.16	2	in	0.625	0.372		
2"	440	550	Yes	No		No		0.312	0.37	2.76	1.16	2	in	0.625	0.372		
2 1/2"	900	1,125	Yes	No		No		0.312	0.37	2.76	1.16	2	in	0.625	0.372		
3"	1,000	1,250	Yes	No		No		0.312	0.37	2.76	1.16	2	in	0.625	0.372		
			0														
			0														
			0														
			0														
			0														
			0														
			0														
			0														

Notes:



Disclaimer: Based on information available from valve manufacturer. All dimensions to be verified by customer prior to purchase confirmation.

Valve Size	Required Actuator Range	Individual Part Order Code*				List Price					Complete Actuator to Valve Order Code*
		(If ordered with the below order codes, Easytork will ship each part as standalone)				Actuator +	Insert +	Extended Shaft +	Bracket or Plate +	= Total Package: Actuator and hardware for mounting to valve	Easytork will ship the actuator, insert, extended shaft, and bracket unassembled in one SKU box. Refer to Assembly & Labor tab if buyer wants Easytork to assemble items together.
		Actuator	Insert	Extended Shaft	Bracket						
1/4"	EVA-0309	C-A-1-11-1-111	D-112-0.375x0.249in	K-AS-1-1-1-2	B-2-F04S-F04S-1.46in						AP.76.1/4".0309.16
	EVA-0309	C-A-1-11-1-111	D-112-0.375x0.249in	K-AS-1-1-1-2	B-2-F04S-F04S-1.46in						AP.76.1/4".0309.16
3/8"	EVA-0309	C-A-1-11-1-111	D-112-0.375x0.249in	K-AS-1-1-1-2	B-2-F04S-F04S-1.46in						AP.76.3/8".0309.16
	EVA-0309	C-A-1-11-1-111	D-112-0.375x0.249in	K-AS-1-1-1-2	B-2-F04S-F04S-1.46in						AP.76.3/8".0309.16
1/2"	EVA-0309	C-A-1-11-1-111	D-112-0.375x0.249in	K-AS-1-1-1-2	B-2-F04S-F04S-1.47in						AP.76.1/2".0309.16
	EVA-0309	C-A-1-11-1-111	D-112-0.375x0.249in	K-AS-1-1-1-2	B-2-F04S-F04S-1.47in						AP.76.1/2".0309.16
3/4"	EVA-0309	C-A-1-11-1-111	D-112-0.375x0.249in	K-AS-1-1-1-2	B-2-F05S-F04S-1.528in						AP.76.3/4".0309.16
	EVA-0411	C-A-2-11-1-111	D-212-0.375x0.249in	K-AS-2-1-1-2	B-2-F05S-F04S-1.528in						AP.76.3/4".0411.16
1"	EVA-0411	C-A-2-11-1-111	D-212-0.375x0.249in	K-AS-2-1-1-2	B-2-F05S-F04S-1.508in						AP.76.1".0411.16
	EVA-0514	C-A-3-11-1-111	D-312-0.375x0.249in	K-AS-3-1-1-2	B-2-F05M-F05M-2.008in						AP.76.1".0514.16
1 1/4"	EVA-0411	C-A-2-11-1-111	D-212-0.625x0.372in	K-AS-2-1-1-2	B-2-F07M-F04M-1.848in						AP.76.1 1/4".0411.16
	EVA-0514	C-A-3-11-1-111	D-312-0.625x0.372in	K-AS-3-1-1-2	B-2-F07M-F05M-2.348in						AP.76.1 1/4".0514.16
1 1/2"	EVA-0514	C-A-3-11-1-111	D-312-0.625x0.372in	K-AS-3-1-1-2	B-2-F07M-F05M-2.348in						AP.76.1 1/2".0514.16
	EVA-0717	C-A-4-11-1-111	D-412-0.625x0.372in	K-AS-4-1-1-2	B-2-F07M-F07M-2.348in						AP.76.1 1/2".0717.16
2"	EVA-0514	C-A-3-11-1-111	D-312-0.625x0.372in	K-AS-3-1-1-2	B-2-F07M-F05M-2.348in						AP.76.2".0514.16
	EVA-0717	C-A-4-11-1-111	D-412-0.625x0.372in	K-AS-4-1-1-2	B-2-F07M-F07M-2.348in						AP.76.2".0717.16
2 1/2"	EVA-0717	C-A-4-11-1-111	D-412-0.625x0.372in	K-AS-4-1-1-2	B-2-F07M-F07M-2.348in						AP.76.2 1/2".0717.16
	EVA-1022	C-A-5-11-1-111	D-512-0.625x0.372in	K-AS-5-1-1-2	B-2-F07L-F10L-2.598in						AP.76.2 1/2".1022.16
3"	EVA-0717	C-A-4-11-1-111	D-412-0.625x0.372in	K-AS-4-1-1-2	B-2-F07M-F07M-2.348in						AP.76.3".0717.16
	EVA-1022	C-A-5-11-1-111	D-512-0.625x0.372in	K-AS-5-1-1-2	B-2-F07L-F10L-2.598in						AP.76.3".1022.16

Disclaimer: Based on information available from valve manufacturer. All dimensions to be verified by customer prior to purchase confirmation.

Note*: Only for actuator and hardware required for mounting to valve. Order auxiliary add-ons (e.g., solenoid valve, lockout & PST, limit switch, chemical resistant adder, etc.) separately. If buyer requires assembly of auxiliary add-ons and/or valve, labor will be charged separately.