

Generic Input		Easytork internal use only	
Valve Brand	Apollo	Valve Brand Truncate	AP
Series	215L / 215 W	Series Truncate	71-AR
Input: 1 = mm / 2 = in	2		
Safety Factor	10%		

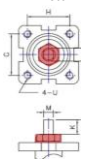
Actuator Design Year   19

Valve Input

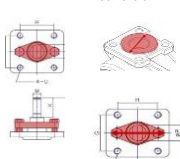
Valve Size	Direct Mount Check			Section Only For Non Direct Mount ("D.M"), Otherwise Leave Blank						Valve Dimension								
	Published valve torque	Incl. safety factor	Any obstruction over flange?	Bracket Check		Extended Shaft Check		Buyer Preference	Valve Info	Valve Flange	Valve Dimension	Valve Stem Shape and Dimension						
				Possible obstruction for std. Easytork bracket?	Out. dia. of obstruction over flange surface	Are bolts for packing gland close to valve stem height?	If bolts interfere with valve stem, what is inside dia. between bolts	If w/ bracket: How much valve stem capture?	If known, capturable valve stem height	In ISO (i.e. F05) or in	Flange to top of valve stem	Stem Shape	Valve stem dimension in in or mm	V	V1	V2	Insert orientation when valve is CLOSED. If Sq 1=diamond / 2=square If DD or B+K 1=in line / 2=not in line	
in-lb	in-lb	1=Yes / 0=No	1=Yes / 0=No	in/mm	1=Yes / 0=No	in/mm	in/mm	in/mm	in/mm	in/mm	in/mm	1 = Square 2 = Double D 3 = Bore + Key	Choose either in / mm	in/mm	in/mm	in/mm	in/mm	
2"	332	365								F07	1.10	2	in	0.476	0.354			1
2 1/2"	398	438								F07	1.10	2	in	0.555	0.433			1
3"	434	477								F07	1.10	2	in	0.555	0.433			1
4"	664	730								F07	1.26	2	in	0.713	0.551			1
5"	929	1,022								F07	1.26	2	in	0.874	0.669			1
6"	1,212	1,333								F07	1.26	2	in	0.874	0.669			1
8"	2,213	2,434								F12	1.26	2	in	0.992	0.748			1
10"	3,682	4,050								F12	2.17	3	in	1.102	0.313	0.313		1
12"	4,779	5,257								F12	2.17	3	in	1.417	0.375	0.375		1
14"	8,231	9,054								F14	2.56	3	in	1.654	0.437	0.437		
16"	11,505	12,656								F16	3.15	3	in	1.969	0.500	0.500		
18"	16,196	17,816								F16	3.15	3	in	1.969	0.500	0.500		
20"	21,550	23,705								F16	3.54	3	in	2.362	0.625	0.625		
24"	33,099	36,409								F25	4.33	3	in	2.559	0.750	0.750		
		0																
		0																
		0																
		0																

Notes:

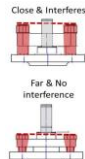
ie. Gland, capi, etc...



If not known, leave blank

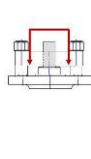


Close & Interferes

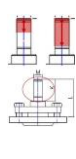


Far & No interference

If not known, leave blank



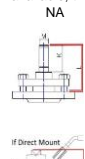
If not known, leave blank



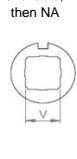
If not known, leave blank



If info not available, then NA

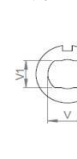


If not known, leave blank

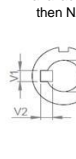


If info not available, then NA

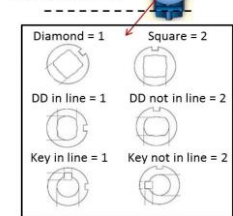
If info not available, then NA



If info not available, then NA



When Valve Is CLOSED Is valve stem: Butterfly valve as example in pipeline



**Disclaimer: Based on information available from valve manufacturer. All dimensions to be verified by customer prior to purchase confirmation.**

Valve Size	Required Actuator Range	Actuator Torque (Actual torque, no additional safety factor included)				Individual Part Order Code* (If ordered with the below order codes, Easytork will ship each part as standalone)				Note	Complete Actuator to Valve Order Code*
		DA @ 60PSI	DA @ 80PSI	FS @ 60PSI	FS @ 80PSI	Actuator	Insert	Extended Shaft	Bracket		
2"	EVA-0514	572	763	372	496	C-A-3-11-1-111	D-312-0.476x0.354in				
	EVA-0514	572	763	372	496	C-A-3-11-1-111	D-312-0.476x0.354in				
2 1/2"	EVA-0514	572	763	372	496	C-A-3-11-1-111	D-312-0.555x0.433in				
	EVA-0717	1,144	1,526	744	992	C-A-4-11-1-111	D-412-0.555x0.433in				
3"	EVA-0514	572	763	372	496	C-A-3-11-1-111	D-312-0.555x0.433in				
	EVA-0717	1,144	1,526	744	992	C-A-4-11-1-111	D-412-0.555x0.433in				
4"	EVA-0717	1,144	1,526	744	992	C-A-4-11-1-111	D-412-0.713x0.551in				
	EVA-0717	1,144	1,526	744	992	C-A-4-11-1-111	D-412-0.713x0.551in				
5"	EVA-0717	1,144	1,526	744	992	C-A-4-11-1-111	D-412-0.874x0.669in			Spacer Plates	
	EVA-1022	2,289	3,051	1,488	1,983	C-A-5-11-1-111	D-512-0.874x0.669in				
6"	EVA-0717	1,144	1,526	744	992	C-A-4-11-1-111	D-412-0.874x0.669in			Spacer Plates	
	EVA-1022	2,289	3,051	1,488	1,983	C-A-5-11-1-111	D-512-0.874x0.669in				
8"	EVA-1022	2,289	3,051	1,488	1,983	C-A-5-11-1-111	D-512-0.992x0.748in				
	EVA-1227	4,577	6,103	2,975	3,967	C-A-6-11-1-111	D-612-0.992x0.748in				
10"	EVA-1227	4,577	6,103	2,975	3,967	C-A-6-11-1-111	D-613-1.102x0.313x0.313in				
	EVA-1436	9,154	12,205	5,950	7,933	C-A-7-11-1-111	D-713-1.102x0.313x0.313in				
12"	EVA-1227	4,577	6,103	2,975	3,967	C-A-6-11-1-111	D-613-1.417x0.375x0.375in			Spacer Plates	
	EVA-1436	9,154	12,205	5,950	7,933	C-A-7-11-1-111	D-713-1.417x0.375x0.375in				
14"	EVA-1436	9,154	12,205	5,950	7,933	C-A-7-11-1-111	D-713-1.654x0.437x0.437in			Transition plate to F14	
	EVA-1646	18,308	24,411	11,900	15,867	C-A-8-11-1-111	D-813-1.654x0.437x0.437in			Transition plate to F14	
16"	EVA-1436	9,154	12,205	5,950	7,933	C-A-7-11-1-111	D-713-1.969x0.500x0.500in			Spacer Plates	
	EVA-1646	18,308	24,411	11,900	15,867	C-A-8-11-1-111	D-813-1.969x0.500x0.500in				
18"	EVA-1436	9,154	12,205	5,950	7,933	C-A-7-11-1-111	D-713-1.969x0.500x0.500in			Spacer Plates	
	EVA-1646	18,308	24,411	11,900	15,867	C-A-8-11-1-111	D-813-1.969x0.500x0.500in				
20"	EVA-1646	18,308	24,411	11,900	15,867	C-A-8-11-1-111	D-813-2.362x0.625x0.625in			Spacer Plate	
	EVA-1646	18,308	24,411	11,900	15,867	C-A-8-11-1-111	D-813-2.362x0.625x0.625in			Spacer Plate	
24"	EVA-1646	18,308	24,411	11,900	15,867	C-A-8-11-1-111	D-813-2.559x0.750x0.750in			Spacer Plate	
	EVA-1646	18,308	24,411	11,900	15,867	C-A-8-11-1-111	D-813-2.559x0.750x0.750in			Spacer Plate	

Easytork will ship the actuator, insert, extended shaft, and bracket unassembled in one SKU box.

Refer to [Assembly & Labor tab](#) if buyer wants Easytork to assemble items together.

AP.71-AR.2".0514.19
AP.71-AR.2".0514.19
AP.71-AR.2 1/2".0514.19
AP.71-AR.2 1/2".0717.19
AP.71-AR.3".0514.19
AP.71-AR.3".0717.19
AP.71-AR.4".0717.19
AP.71-AR.4".0717.19
AP.71-AR.5".0717.19
AP.71-AR.5".1022.19
AP.71-AR.6".0717.19
AP.71-AR.6".1022.19
AP.71-AR.8".1022.19
AP.71-AR.8".1227.19
AP.71-AR.10".1227.19
AP.71-AR.10".1436.19
AP.71-AR.12".1227.19
AP.71-AR.12".1436.19
AP.71-AR.14".1436.19
AP.71-AR.14".1646.19
AP.71-AR.16".1436.19
AP.71-AR.16".1646.19
AP.71-AR.18".1436.19
AP.71-AR.18".1646.19
AP.71-AR.20".1646.19
AP.71-AR.20".1646.19
AP.71-AR.24".1646.19
AP.71-AR.24".1646.19

**Disclaimer:** Based on information available from valve manufacturer. All dimensions to be verified by customer prior to purchase confirmation.

**Note\*:** Only for actuator and hardware required for mounting to valve. Order auxiliary add-ons (e.g., solenoid valve, lockout & PST, limit switch, chemical resistant adder, etc.) separately. If buyer requires assembly of auxiliary add-ons and/or valve, labor will be charged separately.