

Generic Input		Easytork internal use only	
Valve Brand	Keystone	Valve Brand Truncate	KS
Series	AR1 / AR2 / 990 920	Series Truncate	AR
Input: 1 = mm / 2 = in	2		
Safety Factor	25%		

Actuator Design Year

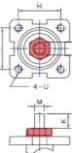
19

Valve Input

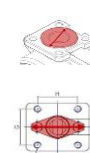
Direct Mount				Section Only For Non Direct Mount ("D.M"), Otherwise Leave Blank						Valve Dimension							
Valve Torque		Check		Bracket Check		Extended Shaft Check		Buyer Preference		Valve Info		Valve Flange		Valve Dimension		Valve Stem Shape and Dimension	
Published valve torque	Incl. safety factor	Any obstruction over flange?	1=Yes / 0=No	Possible obstruction for std. Easytork bracket?	Out. dia. of obstruction over flange surface	Are bolts for packing gland close to valve stem height?	If bolts interfere with valve stem, what is inside dia. between bolts	If w/ bracket: How much valve stem capture?	If known, capturable valve stem height	In ISO (i.e. F05)	Valve Stem Shape	Valve stem dimension in in or mm	V	V1	V2	Insert orientation when valve is CLOSED. If Sq 1=diamond / 2=square If DD or B+K 1=in line / 2=not in line 1 = Diamond or in line / 2=Square or not in line	
Valve Size	in-lb	in-lb		1=Yes / 0=No	in/mm	1=Yes / 0=No	in/mm	in/mm	in/mm	in/mm	Flange to top of valve stem	1 = Square 2 = Double D 3 = Bore + Key	Choose either in / mm	Sq - sq DD - bore b+k - bore	Sq - sq DD - flat b+k - key	b+k - key (leave blank if Sq or DD)	
2"	235	270	No							3.25	1.25	2	in	0.563	0.375		
2 1/2"	264	304	No							3.25	1.25	2	in	0.563	0.375		
3"	355	408	No							3.25	1.25	2	in	0.563	0.375		
4"	549	631	No							3.25	1.25	2	in	0.625	0.438		
5"	779	896	No							3.25	1.25	2	in	0.750	0.500		
6"	1,086	1,249	No							3.25	1.25	2	in	0.750	0.500		
8"	1,885	2,168	No							5	1.25	2	in	0.875	0.625		
10"	3,074	3,535	No							5	2.00	3	in	1.125	0.250	0.250	
12"	4,214	4,846	No							5	2.00	3	in	1.125	0.250	0.250	
14"	6,842	7,868	No							5	3.00	3	in	1.375	0.313	0.313	
16"	9,424	10,838	No							5	3.00	3	in	1.625	0.375	0.375	
18"	12,630	14,525	No							6.5	4.25	3	in	1.875	0.500	0.375	
20"	16,517	18,995	No							6.5	4.25	3	in	1.875	0.500	0.375	
24"	20,616	23,708	No							6.5	4.25	3	in	1.875	0.500	0.375	
		0															
		0															
		0															
		0															

Notes:

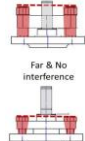
ie. Gland, capi, etc...



If not known, leave blank

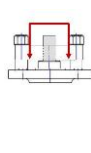


Close & Interferes

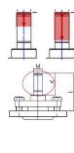


Far & No interference

If not known, leave blank



If not known, leave blank



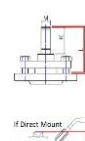
If Direct Mount



If not known, leave blank



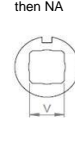
If info not available, then NA



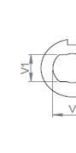
If Direct Mount



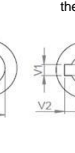
If not known, leave blank



If info not available, then NA

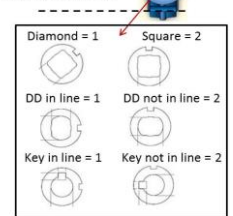


If info not available, then NA



If info not available, then NA

When Valve Is CLOSED Is valve stem: Butterfly valve as example in pipeline



Disclaimer: Based on information available from valve manufacturer. All dimensions to be verified by customer prior to purchase confirmation.

Valve Size	Required Actuator Range	Individual Part Order Code*				Note	Complete Actuator to Valve
		(If ordered with the below order codes, Easytork will ship each part as standalone)					Order Code*
		Actuator	Insert	Extended Shaft	Spacer plate		
2"	EVA-0411	C-A-2-11-1-111	D-212-0.563x0.375in		P-1-3.25"-3.25"-0.60in	Valve stem too tall, need 3.25" flange spacer plate, 0.6" tall Direct mount	KS.AR.2".0411.19
	EVA-0514	C-A-3-11-1-111	D-312-0.563x0.375in				KS.AR.2".0514.19
2 1/2"	EVA-0411	C-A-2-11-1-111	D-212-0.563x0.375in		P-1-3.25"-3.25"-0.60in	Valve stem too tall, need 3.25" flange spacer plate, 0.6" tall Direct mount	KS.AR.2 1/2".0411.19
	EVA-0514	C-A-3-11-1-111	D-312-0.563x0.375in				KS.AR.2 1/2".0514.19
3"	EVA-0514	C-A-3-11-1-111	D-312-0.563x0.375in			Direct mount	KS.AR.3".0514.19
	EVA-0717	C-A-4-11-1-111	D-412-0.563x0.375in				KS.AR.3".0717.19
4"	EVA-0514	C-A-3-11-1-111	D-312-0.625x0.438in			Direct mount	KS.AR.4".0514.19
	EVA-0717	C-A-4-11-1-111	D-412-0.625x0.438in				KS.AR.4".0717.19
5"	EVA-0717	C-A-4-11-1-111	D-412-0.750x0.500in			Direct mount	KS.AR.5".0717.19
	EVA-1022	C-A-5-11-1-111	D-512-0.750x0.500in				KS.AR.5".1022.19
6"	EVA-0717	C-A-4-11-1-111	D-412-0.750x0.500in			Direct mount	KS.AR.6".0717.19
	EVA-1022	C-A-5-11-1-111	D-512-0.750x0.500in				KS.AR.6".1022.19
8"	EVA-1022	C-A-5-11-1-111	D-512-0.875x0.625in			Direct mount	KS.AR.8".1022.19
	EVA-1227	C-A-6-11-1-111	D-612-0.875x0.625in				KS.AR.8".1227.19
10"	EVA-1227	C-A-6-11-1-111	D-613-1.125x0.250x0.250in			Direct mount	KS.AR.10".1227.19
	EVA-1436	C-A-7-11-1-111	D-713-1.125x0.250x0.250in				KS.AR.10".1436.19
12"	EVA-1227	C-A-6-11-1-111	D-613-1.125x0.250x0.250in			Direct mount	KS.AR.12".1227.19
	EVA-1436	C-A-7-11-1-111	D-713-1.125x0.250x0.250in				KS.AR.12".1436.19
14"	EVA-1227	C-A-6-11-1-111	D-613-1.375x0.313x0.313in		P-1-5.0"-5.0"-1.50in	Valve stem too tall, need 5.0" flange spacer plate, 1.5" tall Direct mount	KS.AR.14".1227.19
	EVA-1436	C-A-7-11-1-111	D-713-1.375x0.313x0.313in				KS.AR.14".1436.19
16"	EVA-1436	C-A-7-11-1-111	D-713-1.625x0.375x0.375in		P-1-5.0"-5.0"-1.0in	Valve stem too tall, need 5.0" flange spacer plate, 1.0" tall Needs spacer plate to conjoin 5" BC to 6.5" BC	KS.AR.16".1436.19
	EVA-1646	C-A-8-11-1-111	D-813-1.625x0.375x0.375in		P-1-5.0"-6.5"		KS.AR.16".1646.19
18"	EVA-1436	C-A-7-11-1-111	D-713-1.875x0.500x0.375in		P-1-6.5"-6.5"-2.25in	Valve stem too tall, need 6.5" flange spacer plate, 2.25" tall Direct mount	KS.AR.18".1436.19
	EVA-1646	C-A-8-11-1-111	D-813-1.875x0.500x0.375in				KS.AR.18".1646.19
20"	EVA-1436	C-A-7-11-1-111	D-713-1.875x0.500x0.375in		P-1-6.5"-6.5"-2.25in	Valve stem too tall, need 6.5" flange spacer plate, 2.25" tall Direct mount	KS.AR.20".1436.19
	EVA-1646	C-A-8-11-1-111	D-813-1.875x0.500x0.375in				KS.AR.20".1646.19
24"	EVA-1646	C-A-8-11-1-111	D-813-1.875x0.500x0.375in			Direct mount	KS.AR.24".1646.19
	EVA-1646	C-A-8-11-1-111	D-813-1.875x0.500x0.375in				KS.AR.24".1646.19

Disclaimer: Based on information available from valve manufacturer. All dimensions to be verified by customer prior to purchase confirmation.

Note*: Only for actuator and hardware required for mounting to valve. Order auxiliary add-ons (e.g., solenoid valve, lockout & PST, limit switch, chemical resistant adder, etc.) separately. If buyer requires assembly of auxiliary add-ons and/or valve, labor will be charged separately.