

Generic Input		Easytork internal use only	
Valve Brand	Pratt Industrial	Valve Brand Truncate	PI
Series	HP Class 300	Series Truncate	HP-150
Input: 1 = mm / 2 = in	2		
Safety Factor	25%		

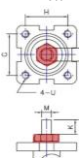
Actuator Design Year 19

Valve Input

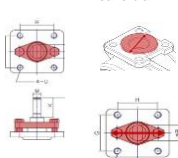
Valve Size	Direct Mount Check			Section Only For Non Direct Mount ("D.M"), Otherwise Leave Blank						Valve Dimension							
	Valve Torque		Check	Bracket Check		Extended Shaft Check		Buyer Preference	Valve Info	Valve Flange	Valve Dimension	Valve Stem Shape and Dimension					
	Published valve torque	Incl. safety factor	Any obstruction over flange?	Possible obstruction for std. Easytork bracket?	Out. dia. of obstruction over flange surface	Are bolts for packing gland close to valve stem height?	If bolts interfere with valve stem, what is inside dia. between bolts	If w/ bracket: How much valve stem capture?	If known, capturable valve stem height	In ISO (i.e. F05)	Flange to top of valve stem	Stem Shape	Valve stem dimension in in or mm	V	V1	V2	Insert orientation when valve is CLOSED. If Sq 1=diamond / 2=square If DD or B+K 1=in line / 2=not in line
in-lb	in-lb	1=Yes / 0=No	1=Yes / 0=No	in/mm	1=Yes / 0=No	in/mm	in/mm	in/mm	in/mm	in/mm	in/mm	1 = Square 2 = Double D 3 = Bore + Key	Choose either in / mm	Sq - sq DD - bore b+k - bore	Sq - sq DD - flat b+k - key	b+k - key (leave blank if Sq or DD)	1 = Diamond or in line / 2=Square or not in line
2"	450	563	No							3.25	1.26	2	in	0.551	0.374		
2 1/2"	472	590	No							3.25	1.26	2	in	0.624	0.437		
3"	528	660	No							3.25	1.26	2	in	0.624	0.437		
4"	843	1,054	No							3.25	1.26	2	in	0.748	0.500		
5"	1,259	1,574	No							3.25	1.26	2	in	0.748	0.500		
6"	1,664	2,080	No							3.25	1.26	2	in	0.748	0.500		
8"	2,327	2,909	No							5	2.01	3	in	1.124	0.250	0.250	
10"	4,103	5,129	No							5	2.01	3	in	1.124	0.250	0.250	
12"	6,238	7,798	No							5	2.09	3	in	1.374	0.310	0.310	
14"	11,748	14,685	No							6.5	2.99	3	in	1.874	0.500	0.500	
16"	16,580	20,725	No							6.5	2.99	3	in	2.122	0.500	0.500	
18"	22,650	28,313	No							10	4.02	3	in	2.555	0.750	0.500	
20"	28,888	36,110	No							10	4.02	3	in	2.555	0.750	0.500	
			0														
			0														
			0														

Notes:

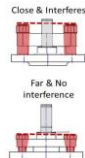
ie. Gland, capi, etc...



If not known, leave blank

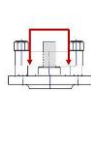


Close & Interferes

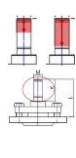


Far & No interference

If not known, leave blank



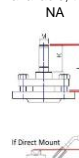
If not known, leave blank



If not known, leave blank



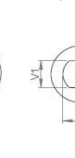
If info not available, then NA



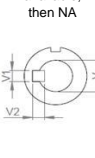
If not known, leave blank



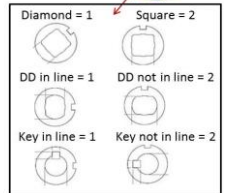
If info not available, then NA



If info not available, then NA



When Valve Is CLOSED Is valve stem: Butterfly valve as example in pipeline



**Disclaimer: Based on information available from valve manufacturer. All dimensions to be verified by customer prior to purchase confirmation.**

Valve Size	Required Actuator Range	Individual Part Order Code*				Note	Complete Actuator to Valve Order Code*	
		(If ordered with the below order codes, Easytork will ship each part as standalone)					Actuator	Order Code*
		Actuator	Insert	Extended Shaft	Bracket			
2"	EVA-0514	C-A-3-11-1-111	D-312-0.551x0.374in			Direct mount	PI.HP-150.2".0514.19	
	EVA-0717	C-A-4-11-1-111	D-412-0.551x0.374in			Direct mount	PI.HP-150.2".0717.19	
2 1/2"	EVA-0514	C-A-3-11-1-111	D-312-0.624x0.437in			Direct mount	PI.HP-150.2 1/2".0514.19	
	EVA-0717	C-A-4-11-1-111	D-412-0.624x0.437in			Direct mount	PI.HP-150.2 1/2".0717.19	
3"	EVA-0514	C-A-3-11-1-111	D-312-0.624x0.437in			Direct mount	PI.HP-150.3".0514.19	
	EVA-0717	C-A-4-11-1-111	D-412-0.624x0.437in			Direct mount	PI.HP-150.3".0717.19	
4"	EVA-0717	C-A-4-11-1-111	D-412-0.748x0.500in			Direct mount	PI.HP-150.4".0717.19	
	EVA-1022	C-A-5-11-1-111	D-512-0.748x0.500in			Direct mount	PI.HP-150.4".1022.19	
5"	EVA-1022	C-A-5-11-1-111	D-512-0.748x0.500in			Direct mount	PI.HP-150.5".1022.19	
	EVA-1227	C-A-6-11-1-111	D-612-0.748x0.500in			Direct mount	PI.HP-150.5".1227.19	
6"	EVA-1022	C-A-5-11-1-111	D-512-0.748x0.500in			Direct mount	PI.HP-150.6".1022.19	
	EVA-1227	C-A-6-11-1-111	D-612-0.748x0.500in			Direct mount	PI.HP-150.6".1227.19	
8"	EVA-1227	C-A-6-11-1-111	D-613-1.124x0.250x0.250in			Direct mount	PI.HP-150.8".1227.19	
	EVA-1436	C-A-7-11-1-111	D-713-1.124x0.250x0.250in			Direct mount	PI.HP-150.8".1436.19	
10"	EVA-1227	C-A-6-11-1-111	D-613-1.124x0.250x0.250in			Direct mount	PI.HP-150.10".1227.19	
	EVA-1436	C-A-7-11-1-111	D-713-1.124x0.250x0.250in			Direct mount	PI.HP-150.10".1436.19	
12"	EVA-1436	C-A-7-11-1-111	D-713-1.374x0.310x0.310in			Direct mount	PI.HP-150.12".1436.19	
	EVA-1646	C-A-8-11-1-111	D-813-1.374x0.310x0.310in			Not Direct Mount, requires bracket and coupling	PI.HP-150.12".1646.19	
14"	EVA-1646	C-A-8-11-1-111	D-813-1.874x0.500x0.500in			Direct mount	PI.HP-150.14".1646.19	
	EVA-1646	C-A-8-11-1-111	D-813-1.874x0.500x0.500in			Direct mount	PI.HP-150.14".1646.19	
16"	EVA-1646	C-A-8-11-1-111	D-813-2.122x0.500x0.500in			Not Direct Mount, requires spacer plate	PI.HP-150.16".1646.19	
	EVA-1646	C-A-8-11-1-111	D-813-2.122x0.500x0.500in			Not Direct Mount, requires spacer plate	PI.HP-150.16".1646.19	
18"	EVA-1646	C-A-8-11-1-111	D-813-2.555x0.750x0.500in			Not Direct Mount, requires spacer plate	PI.HP-150.18".1646.19	
	EVA-1646	C-A-8-11-1-111	D-813-2.555x0.750x0.500in			Not Direct Mount, requires spacer plate	PI.HP-150.18".1646.19	
20"	EVA-1646	C-A-8-11-1-111	D-813-2.555x0.750x0.500in			Not Direct Mount, requires spacer plate	PI.HP-150.20".1646.19	
	EVA-1646	C-A-8-11-1-111	D-813-2.555x0.750x0.500in			Not Direct Mount, requires spacer plate	PI.HP-150.20".1646.19	

**Disclaimer:** Based on information available from valve manufacturer. All dimensions to be verified by customer prior to purchase confirmation.

**Note\*:** Only for actuator and hardware required for mounting to valve. Order auxiliary add-ons (e.g., solenoid valve, lockout & PST, limit switch, chemical resistant adder, etc.) separately. If buyer requires assembly of auxiliary add-ons and/or valve, labor will be charged separately.